



Rapid Industrial Descent Equipment
www.rideinc.com

2016

RIDE Inc. Magnegress Override-Brake Supplement Procedures

Special Instructions/Conditions of Use

Reading user procedure manual prior to use is essential

Only persons that have been deemed competent in the operation of the system should operate the system

Magnegress

2016/02/02

Rev 1.02



RIDE Inc. Magnegress Procedures

i.) Scope:

Actual product specifications may vary, and features, functionality and other product specifications are subject to change without notice or obligation.

Manuals & Amendments can be downloaded from our website: rideinc.com

RIDE Inc. recommends that a function test be performed upon rig up and/or if the system setup has been manipulated in any way.

Please visit our website for the latest manual revisions & parts list

The following procedures are consistent for all brake sheave diameters.



Waivers

Warning: This product is part of an emergency descent system. The user must follow manufacturer's instructions for each part of the system. These instructions must be provided to the user of this equipment. The user must read & understand these instructions before using this equipment. Manufacturer's instructions must be followed for proper use & maintenance of this equipment. Alterations or misuse of this equipment, or failure to follow instructions, may result in serious injury or death.

Important: If you have questions on the use, care or suitability of this equipment for your application, contact RIDE Inc. **(780-621-1570)**

Warning: Do not use a body belt with this equipment. Body belts do not support your entire body, which may result in serious injury or death.

Warning: It is the responsibility of the user & purchaser of this equipment to be trained in the correct care & use of this equipment. The user & purchaser must be aware of the operating characteristics, application limits & consequences of improper use of this equipment.

Warning: Training must be conducted without exposing the trainee to a fall hazard. Training should be repeated on a periodic basis.

Inspection: A formal inspection should be completed if the system parameters are changed, such as after a system is moved, re-rigged or the anchorage is moved.

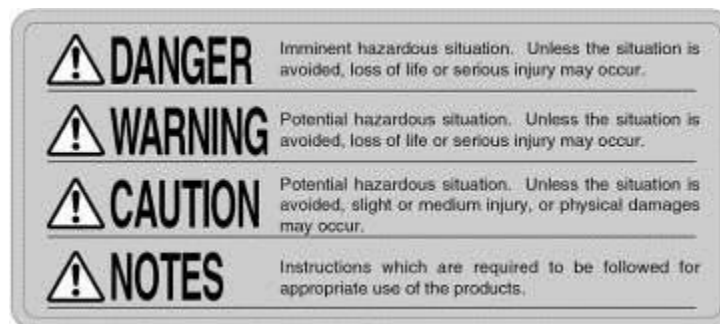
A visual inspection must be done by the user before every use.

Safety Warnings

- 1.1. Read these warnings carefully before inspecting, setting up, installing, using, or tearing down the Rigscape/Magnegress system.
 - 1.1.1. Wear mandatory personal protection equipment at all times.
 - 1.1.2. Do not attempt to lift or move the Magnegress by yourself.
 - 1.1.3. Use proper lifting techniques when inspecting, setting up, installing or tearing down the Rigscape/Magnegress system.
 - 1.1.4. Watch for crush points when inspecting, setting up, installing, using, or tearing down the Rigscape/Magnegress system.
 - 1.1.5. Watch for tripping hazards when inspecting, setting up, installing, using, or tearing down the Rigscape/Magnegress system.
 - 1.1.6. Do not use the Rigscape/Magnegress system unless you are wearing a safety harness and are secured only to the trolley fall-arrest device and shuttle working lanyard attachment ears.
 - 1.1.7. This device is designed for single occupancy only
 - 1.1.8. Do not use if cable, trolley or anchor is damaged.

1.2. Instructions in this manual

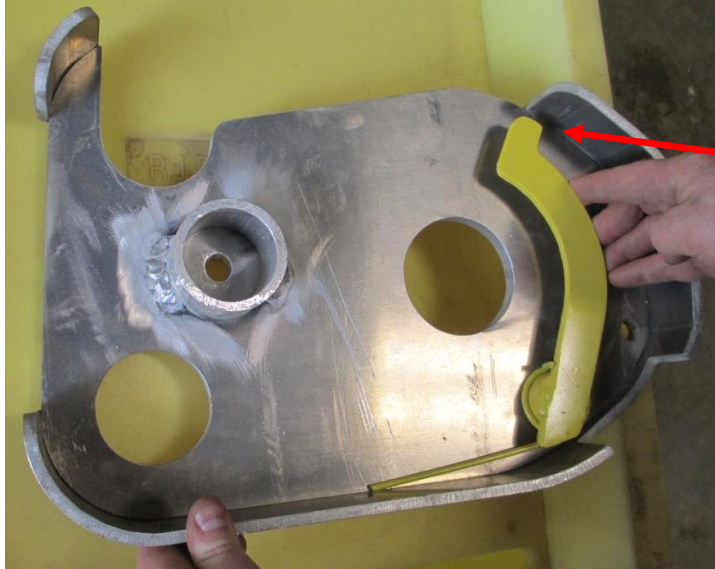
- 1.2.1. The instructions in this manual are classified into “DANGER”, “WARNING”, “CAUTION” and “NOTES”, according to the degree of risk and hindrance.



2. Setup

2.1. Magnegress Override-Brake Setup

- 2.1.1. After the cable is installed onto the Magnegress begin the Magnegress Override-brake procedures.



- 2.1.2. With the cover off check that the brake pad moves freely & that the spring returns the pad to its resting position against the back plate of the cover (arrow).



- 2.1.3. Place the cover onto the Magnegress brake system.



2.1.4. Insert all three cover safety pins.

2.1.5. The following steps are only required when the override-brake is required.



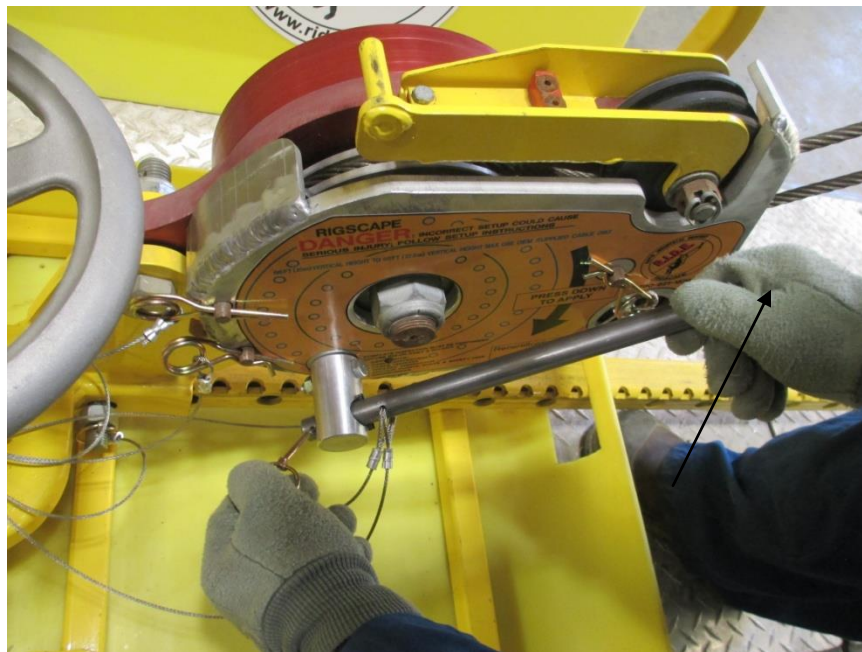
2.1.6. Check to see that the spring pin is properly inserted into the override-brake handle.



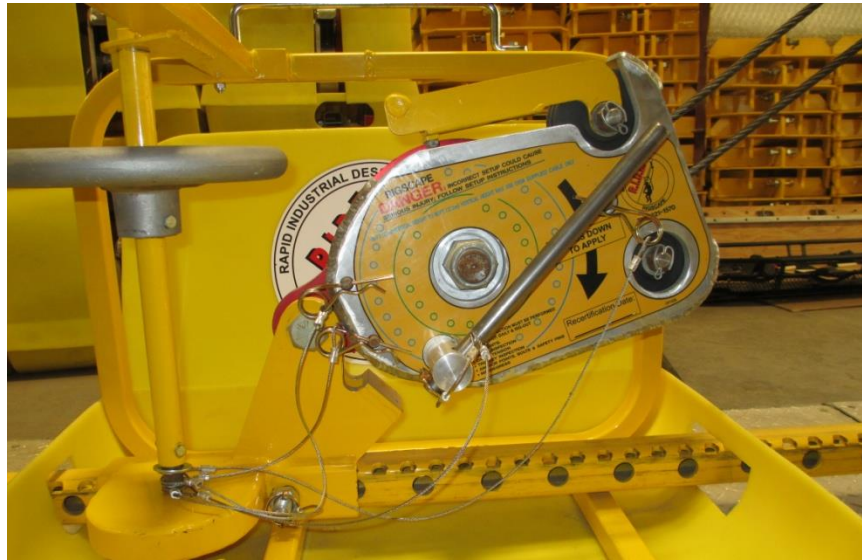
RIDE Inc. Magnegress Override-Brake Supplement Procedures



2.1.7. Insert handle into the override-brake hub.



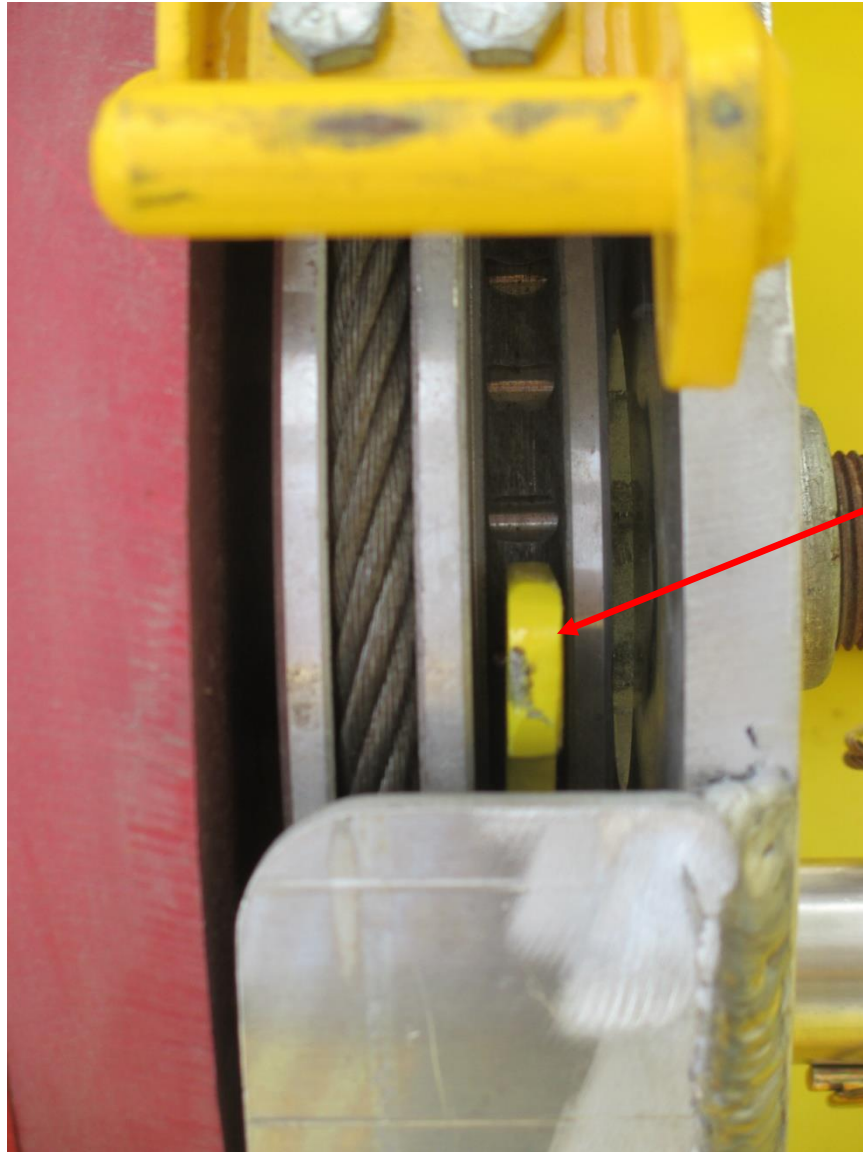
2.1.8. Insert safety pin into the back side of the handle.



2.1.9. This is a view of the assembled override-brake with handle installed.



2.1.10. Apply pressure on the handle as in the direction indicated on the Magnegress cover.



2.1.11. The override brake pad (arrow) should ride the center of the outer sheave.